

BIPLANE CLASS OPTIMUM RACE PATH CRITERIA = 210 MPH @ 3.0 G's

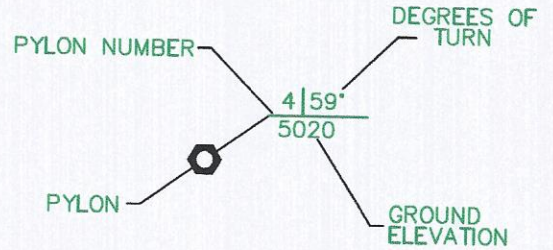


APPROVED COPY

T.J. Gribbin
T.J. GRIBBIN 8/14/13

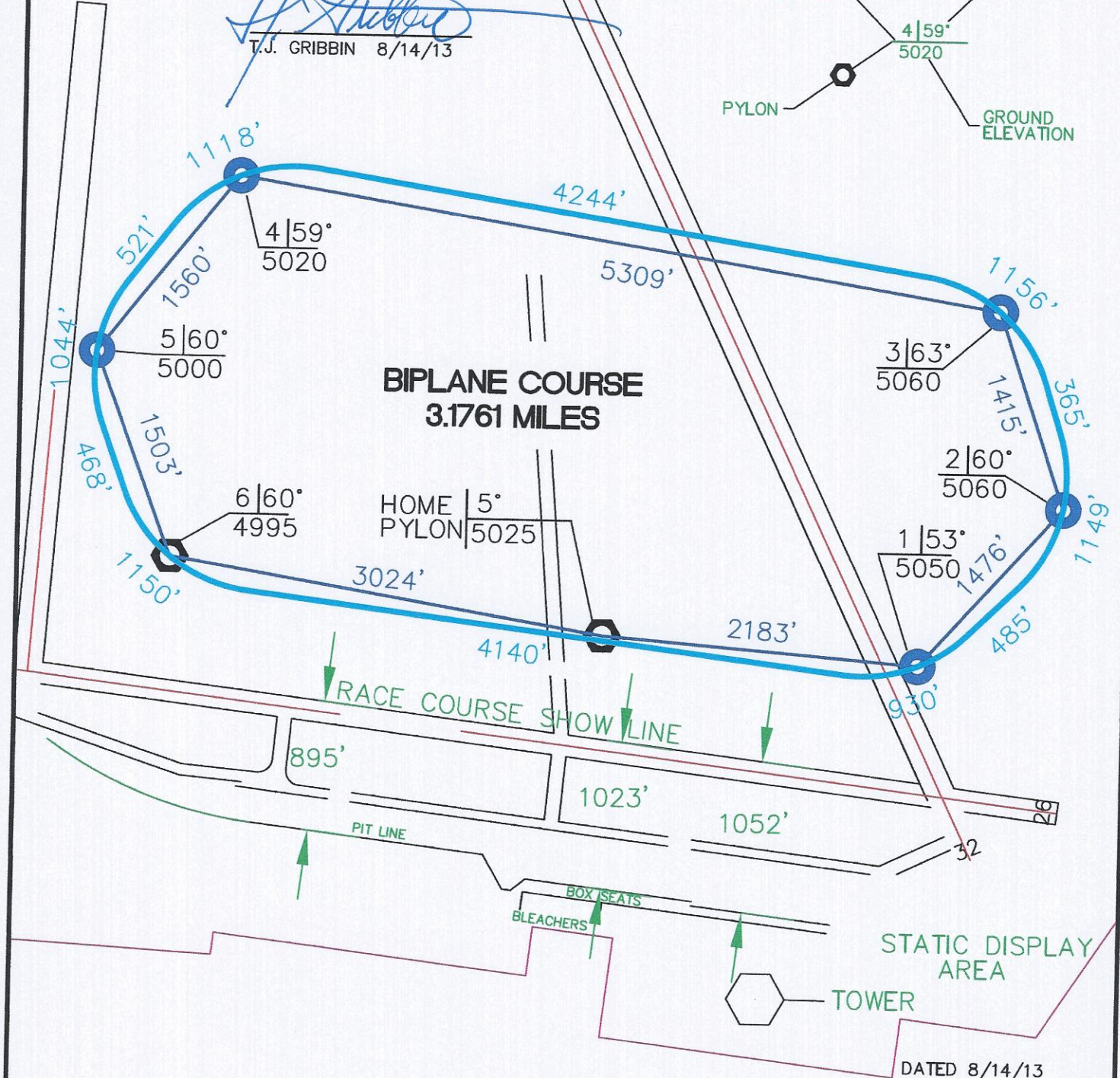
LEGEND

BIPLANE COURSE



**BIPLANE COURSE
3.1761 MILES**

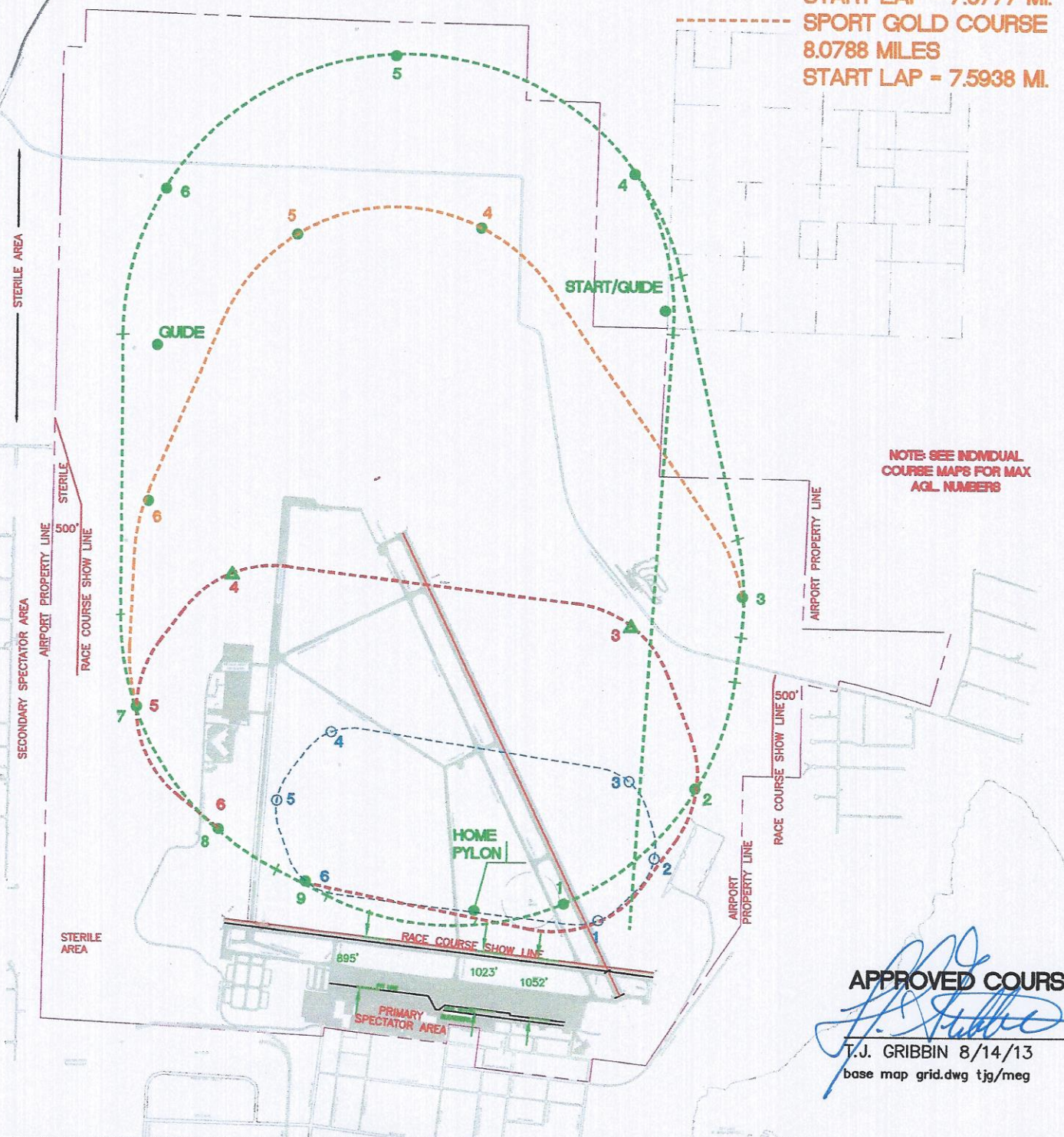
HOME PYLON 5° | 5025



DATED 8/14/13
2012 bip f1 course.dwg

OPTIMUM RACE PATH

- - - - - **T-6 COURSE**
4.9657 MILES
- - - - - **UNLIMITED COURSE**
8.0851 MILES
START LAP - 7.5888 MI
- - - - - **FORMULA ONE COURSE**
3.1875 MILES
- - - - - **JET COURSE**
8.1025 MILES
START LAP - 7.6113 MI.
- - - - - **BIPLANE COURSE**
3.1761 MILES
- - - - - **SPORT COURSE**
6.9680 MILES
START LAP - 7.0777 MI.
- - - - - **SPORT GOLD COURSE**
8.0788 MILES
START LAP - 7.5938 MI.



NOTE: SEE INDIVIDUAL COURSE MAPS FOR MAX AGL NUMBERS

APPROVED COURSE

T.J. Gribbin
 T.J. GRIBBIN 8/14/13
 base map grid.dwg tjg/meg