

# UNLIMITED CLASS OPTIMUM RACE PATH CRITERIA = 500 MPH @ 4G's



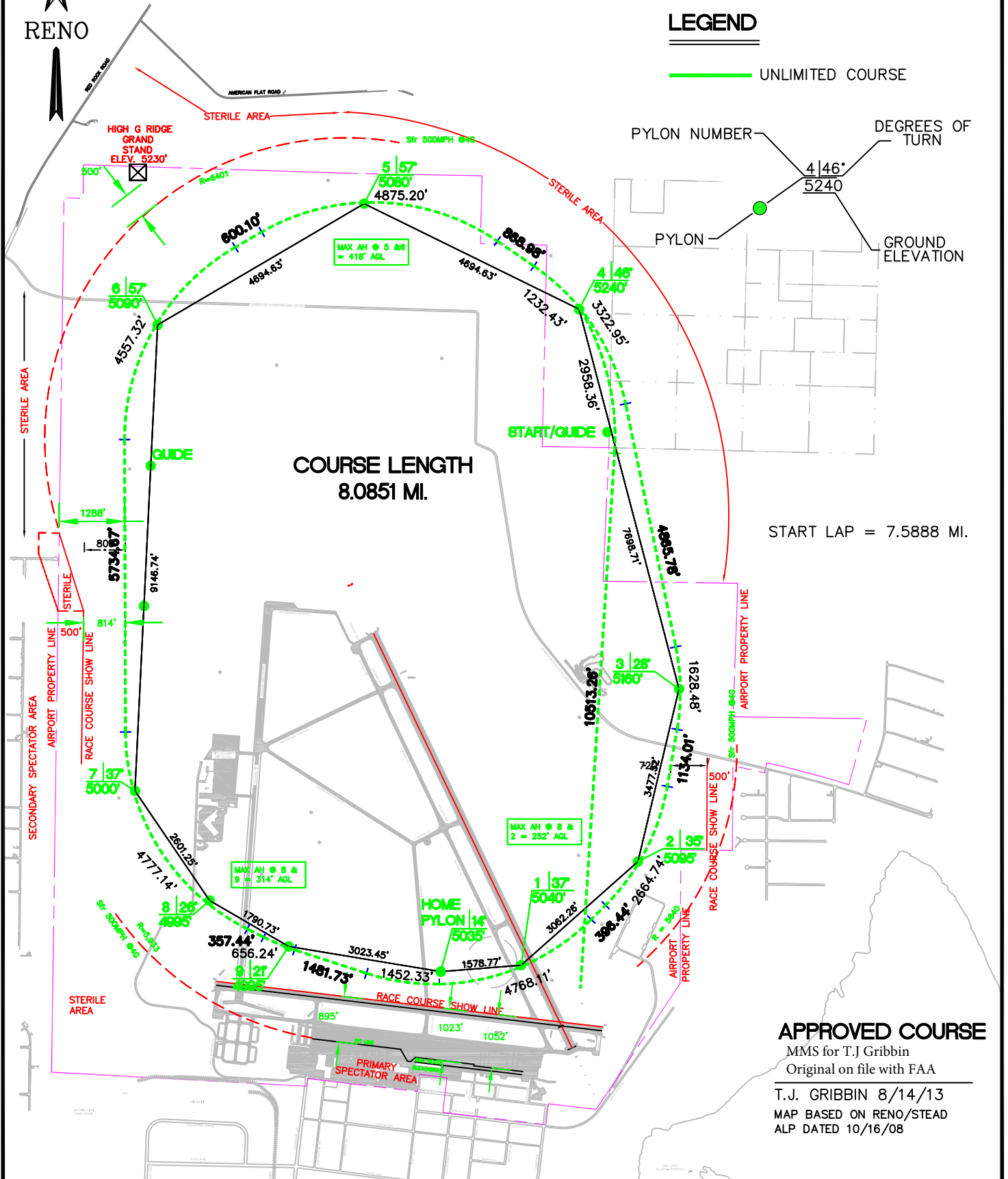
## LEGEND

——— UNLIMITED COURSE

PYLON NUMBER ———> 4 | 46°  
 DEGREES OF TURN ———> 5240  
 PYLON ———> ●  
 GROUND ELEVATION ———>

**COURSE LENGTH  
8.0851 MI.**

START LAP = 7.5888 MI.

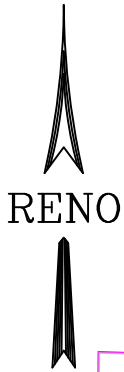


## APPROVED COURSE

MMS for T.J Gribbin  
Original on file with FAA

T.J. GRIBBIN 8/14/13  
MAP BASED ON RENO/STEAD  
ALP DATED 10/16/08

# 2014 OPTIMUM RACE PATH



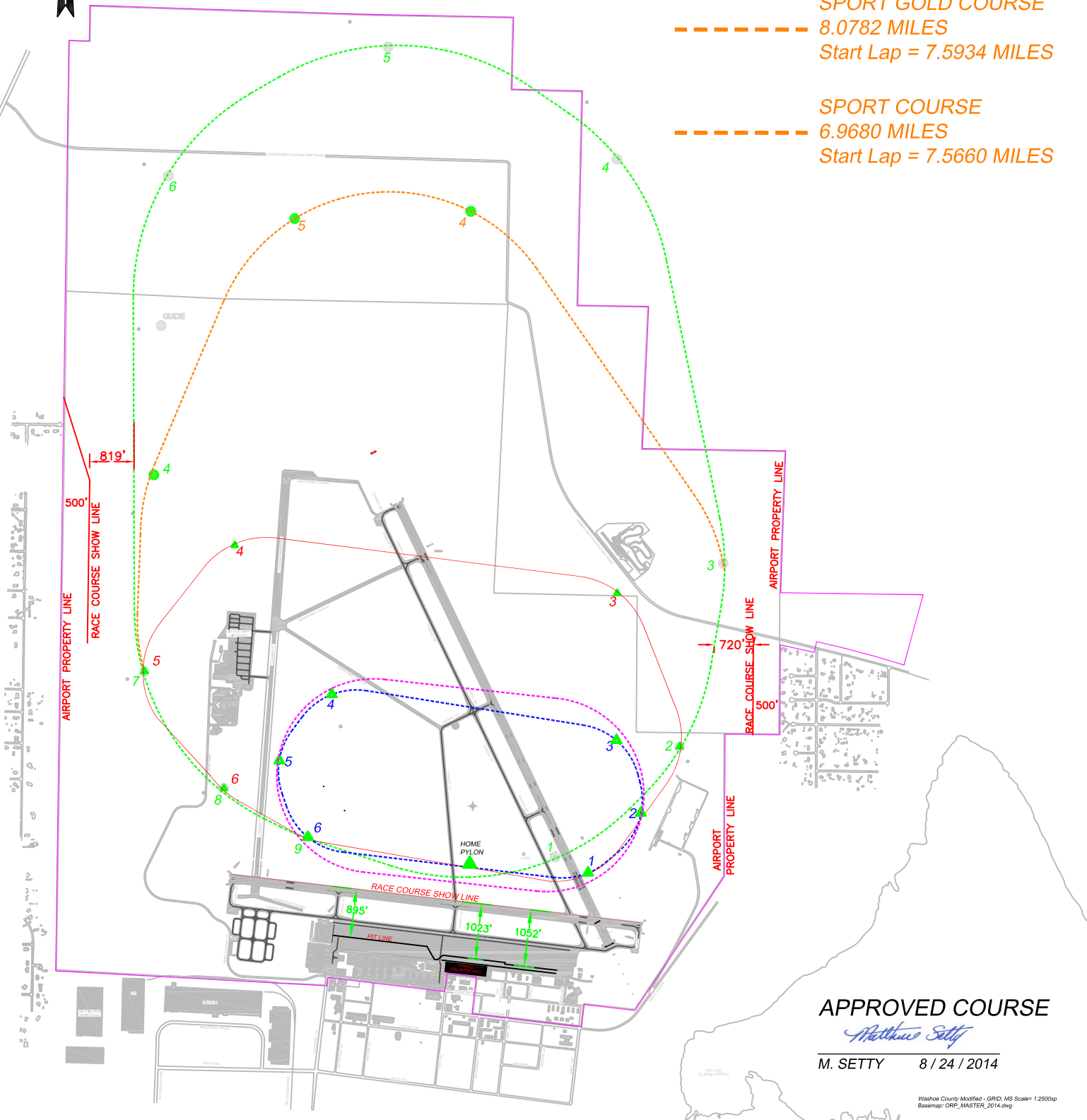
- - - - - **FORMULA ONE COURSE**  
3.1875 MILES
- - - - - **BIPLANE COURSE**  
3.3417 MILES
- - - - - **T-6 COURSE**  
4.9352 MILES

- - - - - **UNLIMITED COURSE**  
8.0851 MILES  
Start Lap = 7.5888 MILES

- - - - - **JET COURSE**  
8.1025 MILES  
Start Lap = 7.6113 MILES

- - - - - **SPORT GOLD COURSE**  
8.0782 MILES  
Start Lap = 7.5934 MILES

- - - - - **SPORT COURSE**  
6.9680 MILES  
Start Lap = 7.5660 MILES



**APPROVED COURSE**

*Matthew Setty*

M. SETTY 8 / 24 / 2014